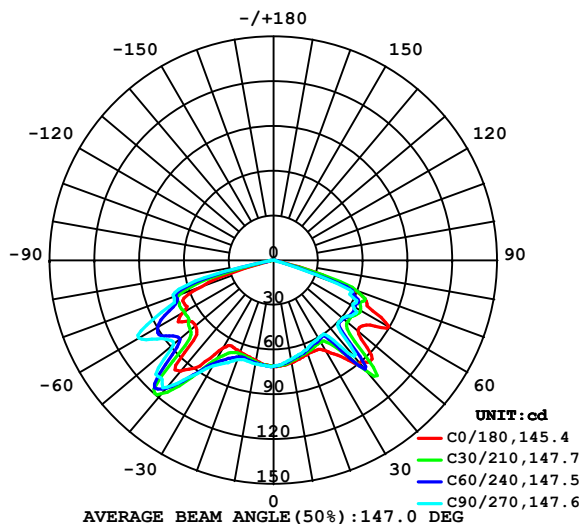


LUMINAIRE PHOTOMETRIC TEST REPORT

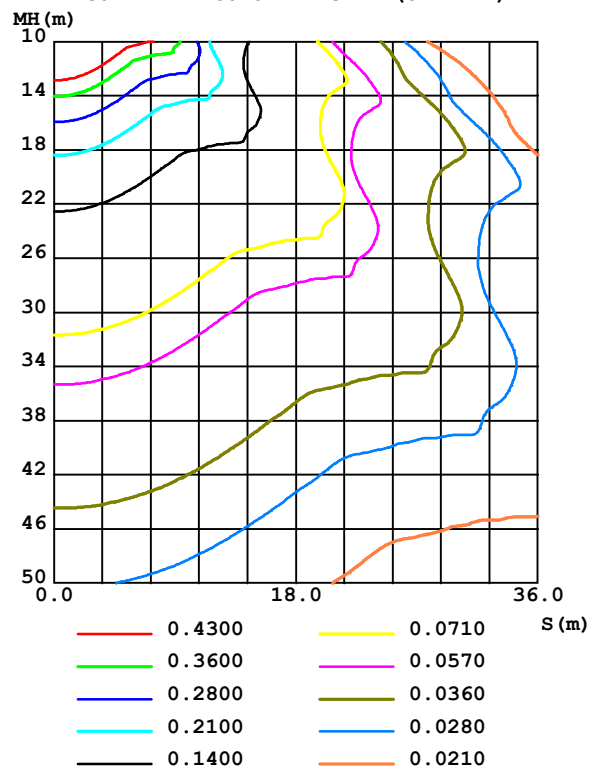
Test:U:4.2000V I:0.4700A P:1.9740W PF:0.9000 Freq:50.00Hz Lamp Flux:340.25x1 lm		
NAME: Emergency CYCLOP	TYPE:	WEIGHT:
SPEC.:	DIM.:	SERIAL No.:
MFR.:	SUR.: 21cm*16cm	Shielding Angle:

DATA OF LAMP		PHOTOMETRIC DATA Eff: 172.37 lm/W			
MODEL	D908S	I _{max} (cd)	127.0	S/MH (C0/180)	1.71
NOMINAL POWER(W)		LOR (%)	100.0	S/MH (C90/270)	1.99
RATED VOLTAGE(V)	4.2	TOTAL FLUX(lm)	340.25	η UP,DN (C0-180)	0.0,43.3
NOMINAL FLUX(lm)	340.25	CIE CLASS	DIRECT	η UP,DN (C180-360)	0.0,56.6
LAMPS INSIDE	1	η up (%)	0.0	CIBSE SHR NOM	1.75
TEST VOLTAGE(V)	4.2	η down (%)	100.0	CIBSE SHR MAX	1.75

LUMINOUS INTENSITY DISTRIBUTION DIAGRAM



C0 PLANE ISOLUX DIAGRAM (UNIT:lx)



C Range: 0 - 360DEG
C Interval: 15.0DEG
Test Speed: MEDIUM
Temperature: 25.3°C
Operators:
Test Date: 2023-06-17

γ Range: 0 - 180DEG
γ Interval: 1.0DEG
Test System: EVERFINE GO-R5000_V2 SYSTEM V2.00.471
Humidity: 65.0%
Test Distance: 2.506m [K=1.0000]
Remarks:

ZONAL FLUX DIAGRAM

ZONAL FLUX DIAGRAM:

γ	C0	C45	C90	C135	C180	C225	C270	C315	γ	Φ zone	Φ total	%lum, lamp
10	69.95	68.44	67.55	67.51	68.29	69.56	70.57	70.55	0- 10	6.676	6.676	1.96,1.96
20	67.10	65.38	63.91	64.12	65.51	67.75	71.11	69.30	10- 20	19.14	25.82	7.59,7.59
30	70.20	62.69	60.32	60.63	68.06	78.84	82.10	81.90	20- 30	31.41	57.23	16.8,16.8
40	89.86	101.6	84.42	94.54	96.86	117.0	111.3	115.6	30- 40	52.83	110.1	32.3,32.3
50	73.91	61.39	60.65	62.55	68.80	76.78	87.66	79.34	40- 50	67.47	177.5	52.2,52.2
60	89.08	63.63	61.37	61.90	70.52	75.27	104.5	73.59	50- 60	66.11	243.6	71.6,71.6
70	55.48	56.10	45.33	50.96	51.51	68.93	71.59	69.80	60- 70	68.01	311.7	91.6,91.6
80	2.003	0.5616	0.4090	0.5295	1.288	3.303	3.893	3.344	70- 80	27.75	339.4	99.7,99.7
90	0.0034	0.0015	0.0164	0.0005	0.0005	0.2443	0.5329	0.3613	80- 90	0.7876	340.2	100,100
100	0.0005	0.0053	0.0164	0.0005	0.0053	0.0039	0.0015	0.0039	90-100	0.0212	340.2	100,100
110	0.0044	0.0126	0.0073	0.0053	0.0068	0.0058	0.0044	0.0063	100-110	0.0065	340.2	100,100
120	0.0082	0.0140	0.0140	0.0087	0.0068	0.0058	0.0058	0.0058	110-120	0.0084	340.2	100,100
130	0.0087	0.0135	0.0155	0.0106	0.0077	0.0073	0.0058	0.0063	120-130	0.0086	340.2	100,100
140	0.0073	0.0116	0.0097	0.0082	0.0082	0.0073	0.0063	0.0063	130-140	0.0070	340.2	100,100
150	0.0068	0.0077	0.0082	0.0073	0.0082	0.0082	0.0073	0.0082	140-150	0.0052	340.2	100,100
160	0.0053	0.0068	0.0068	0.0058	0.0087	0.0092	0.0077	0.0087	150-160	0.0035	340.2	100,100
170	0.0058	0.0058	0.0058	0.0058	0.0097	0.0102	0.0097	0.0106	160-170	0.0022	340.2	100,100
180	0.0111	0.0111	0.0106	0.0116	0.0097	0.0111	0.0102	0.0106	170-180	0.0008	340.2	100,100
DEG	LUMINOUS INTENSITY:cd									UNIT:lm		

Conical surface Flux(90deg): 145.9 lm

%lum = 42.9%

%lamp = 42.9%

Conical surface Flux(120deg): 243.64 lm

%lum = 71.6%

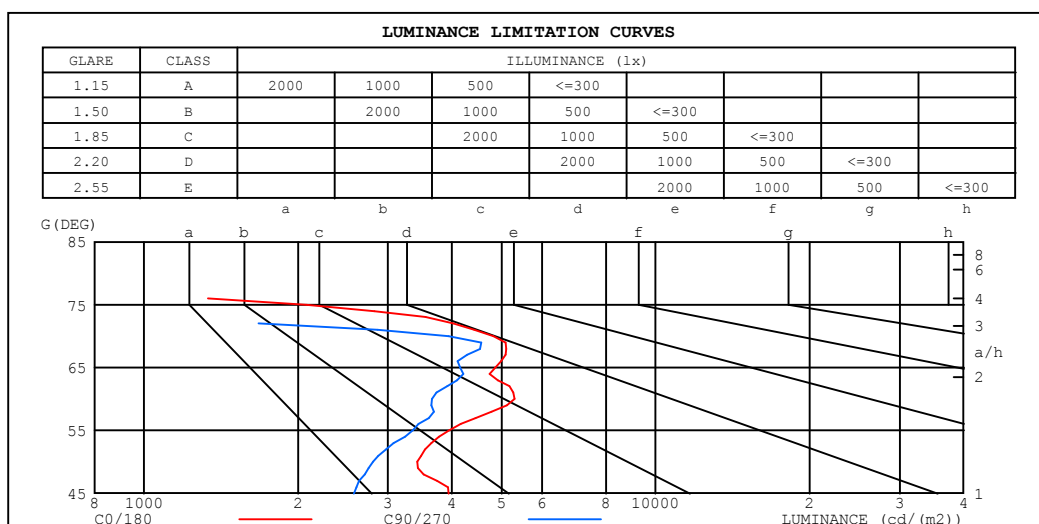
%lamp = 71.6%

C Range: 0 - 360DEG
 C Interval: 15.0DEG
 Test Speed: MEDIUM
 Temperature:25.3°C
 Operators:
 Test Date:2023-06-17

γ Range: 0 - 180DEG
 γ Interval: 1.0DEG
 Test System:EVERFINE GO-R5000_V2 SYSTEM V2.00.471
 Humidity:65.0%
 Test Distance:2.506m [K=1.0000]
 Remarks:

LUMINANCE LIMITATION CURVES

Test:U:4.2000V I:0.4700A P:1.9740W PF:0.9000 Freq:50.00Hz Lamp Flux:340.25x1 lm		
NAME: Emergency CYCLOP	TYPE:	WEIGHT:
SPEC.:	DIM.:	SERIAL No.:
MFR.:	SUR.: 21cm*16cm	Shielding Angle:



LUMINANCE cd/ (m2)		
G (DEG)	C0/180	C90/270
85	194	10
80	343	70
75	2082	289
70	4828	3944
65	4868	4146
60	5303	3653
55	3948	3350
50	3422	2808
45	3938	2571

C Range: 0 - 360DEG
C Interval: 15.0DEG
Test Speed: MEDIUM
Temperature:25.3°C
Operators:
Test Date:2023-06-17

γ Range: 0 - 180DEG
 γ Interval: 1.0DEG
Test System:EVERFINE GO-R5000_V2 SYSTEM V2.00.471
Humidity:65.0%
Test Distance:2.506m [K=1.0000]
Remarks:

WEC AND CCEC

Test:U:4.2000V I:0.4700A P:1.9740W PF:0.9000 Freq:50.00Hz Lamp Flux:340.25x1 lm		
NAME: Emergency CYCLOP	TYPE:	WEIGHT:
SPEC.:	DIM.:	SERIAL No.:
MFR.:	SUR.: 21cm*16cm	Shielding Angle:

pcc	80%			70%			50%			30%			10%			0	
pw	50%	30%	10%	50%	30%	10%	50%	30%	10%	50%	30%	10%	50%	30%	10%	0	
pfc	20%			20%			20%			20%			20%			0	
RCR	RCR:Room Cavity Ratio						Wall Exitance Coefficients(WEC)										
0.0																	
1.0	.327	.186	.059	.320	.182	.058	.306	.176	.056	.294	.170	.054	.283	.164	.053		
2.0	.317	.174	.053	.311	.171	.053	.299	.166	.052	.288	.161	.050	.277	.157	.049		
3.0	.295	.157	.047	.290	.155	.047	.279	.151	.046	.269	.147	.045	.260	.144	.045		
4.0	.272	.142	.042	.267	.140	.041	.258	.137	.041	.249	.134	.040	.241	.131	.040		
5.0	.251	.128	.037	.247	.127	.037	.238	.124	.036	.230	.121	.036	.223	.119	.036		
6.0	.232	.116	.033	.228	.115	.033	.220	.113	.033	.213	.111	.033	.206	.109	.032		
7.0	.215	.106	.030	.211	.105	.030	.204	.103	.030	.198	.101	.030	.192	.100	.029		
8.0	.200	.098	.027	.196	.097	.027	.190	.095	.027	.185	.094	.027	.179	.092	.027		
9.0	.186	.090	.025	.183	.089	.025	.178	.088	.025	.173	.087	.025	.168	.085	.025		
10.0	.174	.084	.023	.172	.083	.023	.167	.082	.023	.162	.081	.023	.158	.079	.023		

pcc	80%			70%			50%			30%			10%			0	
pw	50%	30%	10%	50%	30%	10%	50%	30%	10%	50%	30%	10%	50%	30%	10%	0	
pfc	20%			20%			20%			20%			20%			0	
RCR	RCR:Room Cavity Ratio						Ceiling Cavity Exitance Coefficients (CCEC)										
0.0	.191	.191	.191	.163	.163	.163	.111	.111	.111	.064	.064	.064	.020	.020	.020		
1.0	.182	.156	.133	.155	.134	.115	.106	.092	.079	.061	.053	.046	.020	.017	.015		
2.0	.176	.132	.095	.151	.114	.082	.103	.079	.057	.059	.046	.034	.019	.015	.011		
3.0	.170	.115	.071	.145	.099	.061	.100	.069	.043	.058	.040	.025	.019	.013	.008		
4.0	.163	.102	.055	.140	.088	.048	.096	.061	.034	.056	.036	.020	.018	.012	.007		
5.0	.156	.092	.044	.134	.079	.038	.092	.055	.027	.053	.032	.016	.017	.011	.005		
6.0	.149	.083	.037	.128	.072	.032	.088	.051	.023	.051	.030	.013	.016	.010	.004		
7.0	.142	.077	.031	.122	.066	.027	.084	.047	.019	.049	.027	.011	.016	.009	.004		
8.0	.135	.071	.027	.116	.062	.024	.080	.043	.017	.047	.025	.010	.015	.008	.003		
9.0	.128	.066	.024	.111	.057	.021	.077	.040	.015	.045	.024	.009	.014	.008	.003		
10.0	.122	.062	.021	.105	.054	.019	.073	.038	.013	.043	.022	.008	.014	.007	.003		

C Range: 0 - 360DEG
C Interval: 15.0DEG
Test Speed: MEDIUM
Temperature:25.3℃
Operators:
Test Date:2023-06-17

γ Range: 0 - 180DEG
γ Interval: 1.0DEG
Test System:EVERFINE GO-R5000_V2 SYSTEM V2.00.471
Humidity:65.0%
Test Distance:2.506m [K=1.0000]
Remarks:

UGR(Unified Glare Rating) Table

Test:U:4.2000V I:0.4700A P:1.9740W PF:0.9000 Freq:50.00Hz Lamp Flux:340.25x1 lm											
NAME: Emergency CYCLOP					TYPE:			WEIGHT:			
SPEC.:					DIM.:			SERIAL No.:			
MFR.:					SUR.: 21cm*16cm			Shielding Angle:			
ceiling/cavity		0.7	0.7	0.5	0.5	0.3	0.7	0.7	0.5	0.5	0.3
walls		0.5	0.3	0.5	0.3	0.3	0.5	0.3	0.5	0.3	0.3
working plane		0.2	0.2	0.2	0.2	0.2	0.2	0.2	0.2	0.2	0.2
Room dimensions		Viewed crosswise					Viewed endwise				
x = 2H y = 2H		22.3	24.0	22.6	24.2	24.4	21.3	23.0	21.6	23.2	23.4
3H		25.0	26.5	25.3	26.7	27.0	23.7	25.2	24.0	25.4	25.7
4H		25.3	26.8	25.6	27.1	27.3	23.6	25.0	23.9	25.3	25.6
6H		25.2	26.6	25.6	26.9	27.2	23.5	24.8	23.8	25.1	25.4
8H		25.2	26.5	25.5	26.8	27.1	23.4	24.7	23.8	25.0	25.3
12H		25.1	26.4	25.5	26.7	27.0	23.4	24.6	23.7	24.9	25.3
4H 2H		23.1	24.6	23.5	24.9	25.1	22.4	23.9	22.8	24.2	24.4
3H		25.8	27.1	26.2	27.4	27.7	24.6	25.9	25.0	26.2	26.6
4H		26.1	27.3	26.5	27.6	28.0	24.6	25.8	25.0	26.1	26.4
6H		26.1	27.1	26.5	27.5	27.8	24.5	25.5	24.9	25.9	26.2
8H		26.0	27.0	26.4	27.4	27.7	24.4	25.4	24.9	25.8	26.2
12H		26.0	26.9	26.4	27.2	27.7	24.4	25.3	24.8	25.7	26.1
8H 4H		26.1	27.1	26.5	27.4	27.8	24.7	25.6	25.1	26.0	26.4
6H		26.0	26.8	26.5	27.2	27.7	24.6	25.4	25.0	25.8	26.2
8H		26.0	26.7	26.5	27.1	27.6	24.5	25.2	25.0	25.7	26.1
12H		26.0	26.6	26.5	27.0	27.5	24.5	25.1	25.0	25.6	26.0
12H 4H		26.1	27.0	26.5	27.3	27.8	24.6	25.5	25.0	25.9	26.3
6H		26.0	26.7	26.5	27.1	27.6	24.5	25.2	25.0	25.7	26.1
8H		26.0	26.6	26.5	27.0	27.5	24.5	25.1	25.0	25.6	26.0
Variations with the observer position at spacings(CIE Pub.117):											
S = 1.0H		+ 0.2 / - 0.4					+ 0.3 / - 0.5				
1.5H		+ 0.3 / - 0.5					+ 0.9 / - 0.9				
2.0H		+ 1.0 / - 0.9					+ 1.2 / - 1.7				

CIE Pub.117, 340.2 lm Total Lamp Luminous Flux Correct (8log(F/F0) = -3.7)
Area: 0.0336 m2

C Range: 0 - 360DEG
C Interval: 15.0DEG
Test Speed: MEDIUM
Temperature:25.3℃
Operators:
Test Date:2023-06-17

γ Range: 0 - 180DEG
γ Interval: 1.0DEG
Test System:EVERFINE GO-R5000_V2 SYSTEM V2.00.471
Humidity:65.0%
Test Distance:2.506m [K=1.0000]
Remarks:

UTILIZATION FACTORS TABLE

Test:U:4.2000V I:0.4700A P:1.9740W PF:0.9000 Freq:50.00Hz Lamp Flux:340.25x1 lm		
NAME: Emergency CYCLOP	TYPE:	WEIGHT:
SPEC.:	DIM.:	SERIAL No.:
MFR.:	SUR.: 21cm*16cm	Shielding Angle:

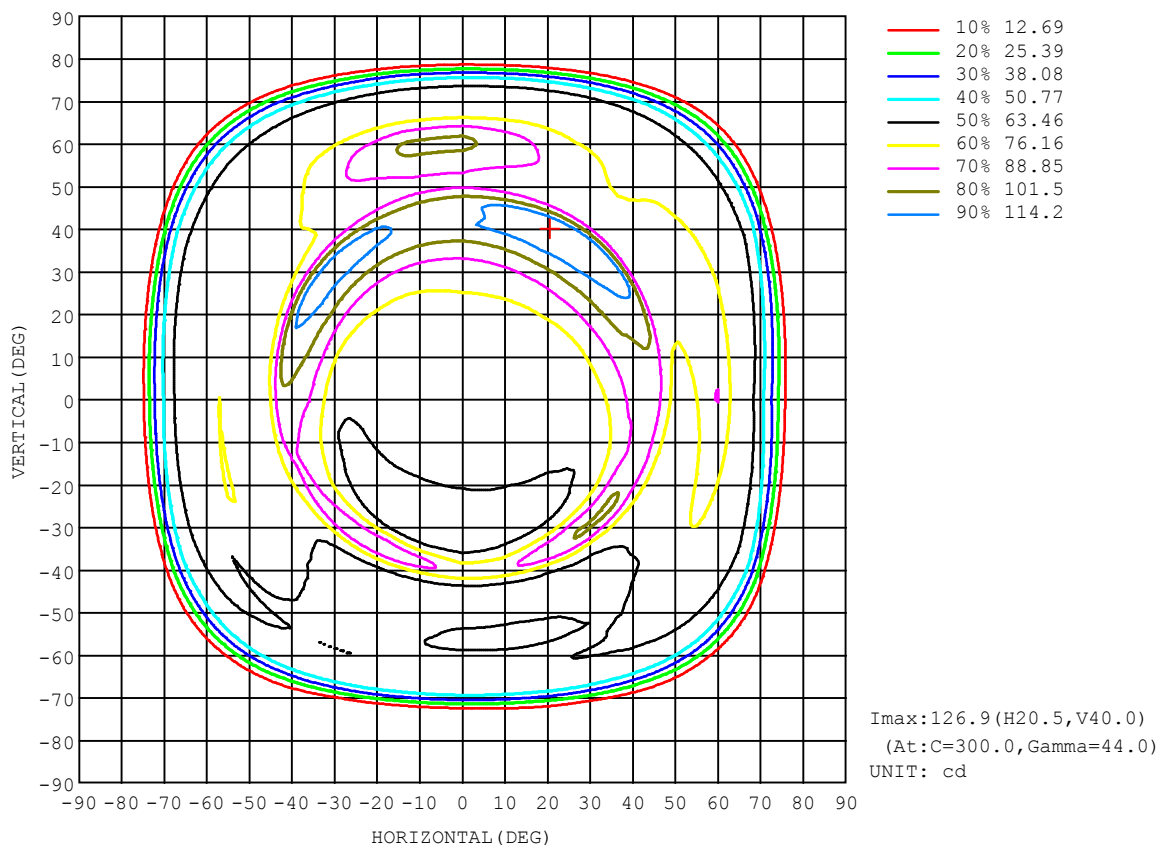
REFLECTANCE										
Ceiling	0.8	0.8	0.8	0.7	0.7	0.7	0.5	0.5	0.5	0
Walls	0.7	0.5	0.3	0.7	0.5	0.3	0.7	0.5	0.3	0
Working plane	0.2	0.2	0.2	0.2	0.2	0.2	0.2	0.2	0.2	0
ROOM INDEX	UTILIZATION FACTORS (PERCENT) $k(RI) \times RCR = 5$									
$k = 0.60$	51	38	30	50	37	30	49	37	30	23
0.80	61	48	40	60	47	39	58	47	39	31
1.00	70	57	49	69	57	49	66	59	48	40
1.25	78	66	58	76	65	57	73	64	57	48
1.50	83	72	64	82	71	64	78	69	63	54
2.00	92	82	75	90	81	74	86	78	72	64
2.50	96	88	81	94	86	80	90	84	78	69
3.00	100	93	87	98	91	86	94	88	83	75
4.00	105	99	94	103	97	93	98	94	90	81
5.00	108	103	99	106	101	97	101	97	94	85
ROOM INDEX	UF (total)									Direct
According to DIN EN 13032-2 2004			Suspended					SHR NOM = 1.25		

C Range: 0 - 360DEG
 C Interval: 15.0DEG
 Test Speed: MEDIUM
 Temperature: 25.3°C
 Operators:
 Test Date: 2023-06-17

γ Range: 0 - 180DEG
 γ Interval: 1.0DEG
 Test System: EVERFINE GO-R5000_V2 SYSTEM V2.00.471
 Humidity: 65.0%
 Test Distance: 2.506m [K=1.0000]
 Remarks:

ISOCANDELA DIAGRAM

Test:U:4.2000V I:0.4700A P:1.9740W PF:0.9000 Freq:50.00Hz Lamp Flux:340.25x1 lm		
NAME: Emergency CYCLOP	TYPE:	WEIGHT:
SPEC.:	DIM.:	SERIAL No.:
MFR.:	SUR.: 21cm*16cm	Shielding Angle:

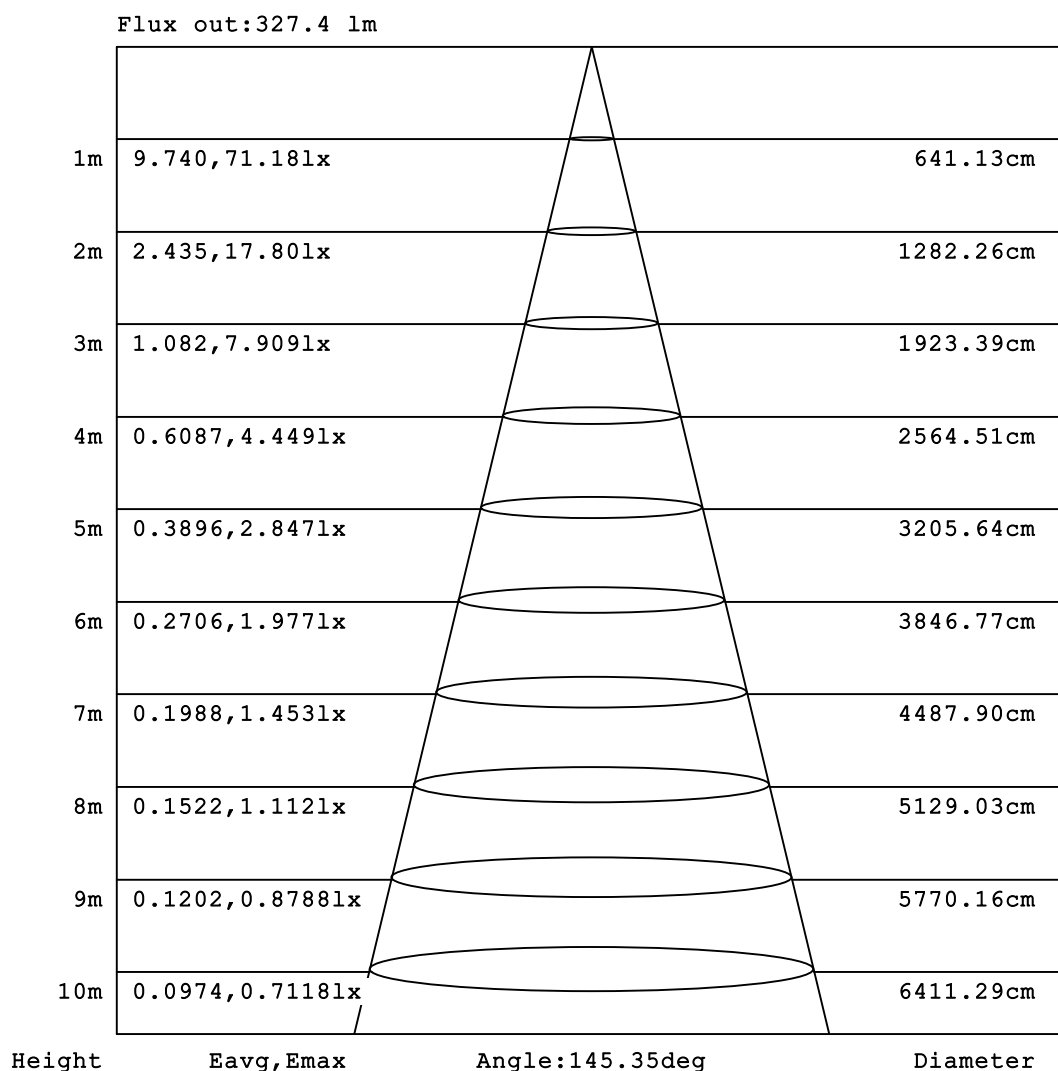


C Range: 0 - 360DEG
C Interval: 15.0DEG
Test Speed: MEDIUM
Temperature:25.3°C
Operators:
Test Date:2023-06-17

γ Range: 0 - 180DEG
γ Interval: 1.0DEG
Test System:EVERFINE GO-R5000_V2 SYSTEM V2.00.471
Humidity:65.0%
Test Distance:2.506m [K=1.0000]
Remarks:

AAI Figure

Test:U:4.2000V I:0.4700A P:1.9740W PF:0.9000 Freq:50.00Hz Lamp Flux:340.25x1 lm		
NAME: Emergency CYCLOP	TYPE:	WEIGHT:
SPEC.:	DIM.:	SERIAL No.:
MFR.:	SUR.: 21cm*16cm	Shielding Angle:

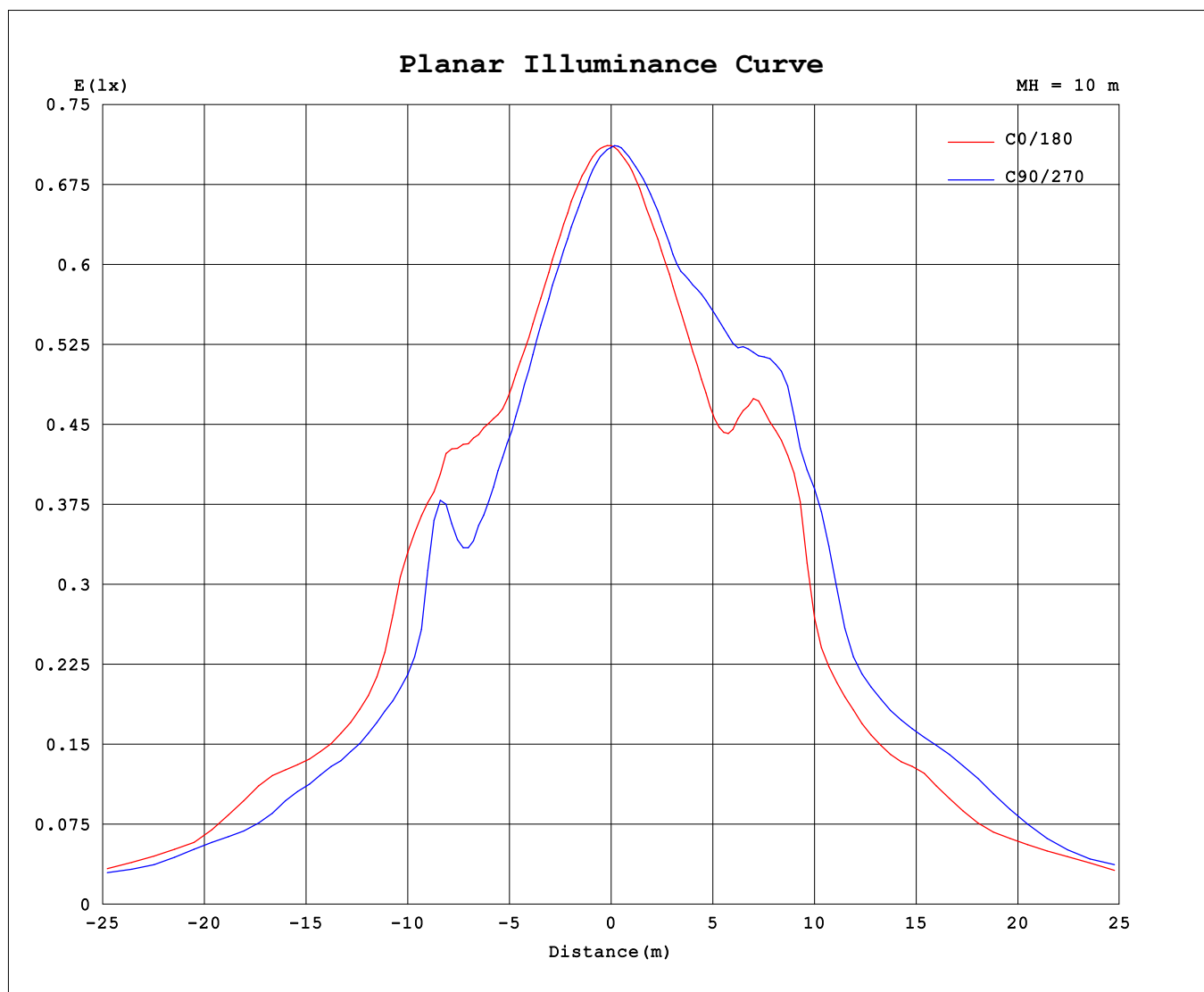


Note:The Curves indicate the illuminated area and the average illumination when the luminaire is at different distance.

C Range: 0 - 360DEG
C Interval: 15.0DEG
Test Speed: MEDIUM
Temperature:25.3℃
Operators:
Test Date:2023-06-17

γ Range: 0 - 180DEG
γ Interval: 1.0DEG
Test System:EVERFINE GO-R5000_V2 SYSTEM V2.00.471
Humidity:65.0%
Test Distance:2.506m [K=1.0000]
Remarks:

Planar Illuminance Curve



C Range: 0 - 360DEG
C Interval: 15.0DEG
Test Speed: MEDIUM
Temperature: 25.3°C
Operators:
Test Date: 2023-06-17

γ Range: 0 - 180DEG
 γ Interval: 1.0DEG
Test System: EVERFINE GO-R5000_V2 SYSTEM V2.00.471
Humidity: 65.0%
Test Distance: 2.506m [K=1.0000]
Remarks:

LUMINOUS DISTRIBUTION INTENSITY DATA

Test:U:4.2000V I:0.4700A P:1.9740W PF:0.9000 Freq:50.00Hz Lamp Flux:340.25x1 lm		
NAME: Emergency CYCLOP	TYPE:	WEIGHT:
SPEC.:	DIM.:	SERIAL No.:
MFR.:	SUR.: 21cm*16cm	Shielding Angle:

Table--1

UNIT: cd

C (DEG) γ (DEG)	0	15	30	45	60	75	90	105	120	135	150	165	180	195	210	225	240	255	270
0	71.2	71.2	71.1	71.1	71.1	71.1	71.0	71.0	71.0	71.0	71.0	70.9	71.2	71.2	71.1	71.1	71.1	71.1	71.0
5	71.0	70.8	70.5	70.3	70.1	70.0	69.7	69.6	69.6	69.6	69.7	69.8	70.2	70.4	70.5	70.6	70.8	71.0	71.0
10	70.0	69.6	68.9	68.4	68.1	67.8	67.6	67.4	67.4	67.5	67.7	67.8	68.3	68.7	69.2	69.6	69.9	70.3	70.6
15	68.4	67.8	67.0	66.6	66.2	66.1	65.7	65.4	65.5	65.6	65.9	66.2	66.8	67.2	67.7	68.2	68.8	69.4	69.9
20	67.1	66.2	65.8	65.4	64.7	64.4	63.9	63.7	63.9	64.1	64.4	65.0	65.5	66.1	66.7	67.7	69.1	70.3	71.1
25	66.8	65.1	64.5	63.5	62.7	62.1	61.5	61.4	61.8	62.3	62.7	63.3	64.5	65.9	68.6	70.8	72.8	74.8	76.1
30	70.2	65.8	63.5	62.7	61.7	60.8	60.3	59.9	60.5	60.6	61.1	63.0	68.1	72.7	76.4	78.8	79.9	81.1	82.1
35	78.6	73.6	69.7	67.1	64.6	62.5	60.9	63.0	67.3	70.2	72.8	78.1	86.3	92.4	96.2	95.2	94.2	93.9	94.3
40	89.9	87.8	96.7	102	95.5	85.0	84.4	91.5	94.2	94.5	91.9	87.9	96.9	109	117	117	112	110	111
45	93.6	89.5	77.3	67.1	62.0	61.5	61.1	61.0	60.6	62.4	66.2	71.2	76.0	83.9	95.6	104	109	109	110
50	73.9	69.1	64.7	61.4	61.3	61.3	60.7	60.4	59.6	62.6	65.7	67.5	68.8	70.5	73.0	76.8	82.2	86.5	87.7
55	76.1	70.7	65.2	61.6	63.4	65.8	64.6	62.0	60.7	62.4	68.6	72.7	71.1	70.6	69.6	78.1	88.3	92.7	91.9
60	89.1	79.7	67.6	63.6	62.7	61.6	61.4	61.1	61.8	61.9	65.0	69.5	70.5	70.0	69.4	75.3	89.7	104	104
65	69.1	67.0	65.8	64.4	62.8	60.3	58.9	57.8	59.6	62.3	64.8	68.5	66.7	68.8	70.0	69.9	74.4	80.9	83.0
70	55.5	62.3	59.0	56.1	52.3	47.9	45.3	44.4	46.7	51.0	54.6	55.3	51.5	62.8	67.0	68.9	69.8	72.1	71.6
75	18.1	18.4	8.77	4.34	3.12	2.69	2.52	2.65	2.98	3.32	3.39	6.36	10.5	21.7	32.8	42.8	48.5	52.3	54.4
80	2.00	1.37	0.90	0.56	0.47	0.42	0.41	0.41	0.45	0.53	0.66	0.93	1.29	1.84	2.60	3.30	3.63	3.79	3.89
85	0.57	0.44	0.32	0.22	0.14	0.07	0.03	0.03	0.05	0.14	0.25	0.38	0.51	0.63	0.72	0.81	0.91	1.05	1.14
90	0.00	0.00	0.00	0.00	0.01	0.02	0.02	0.01	0.00	0.00	0.00	0.00	0.00	0.00	0.05	0.24	0.39	0.49	0.53
95	0.00	0.00	0.00	0.00	0.01	0.02	0.02	0.01	0.00	0.00	0.00	0.00	0.00	0.00	0.00	0.00	0.00	0.00	0.00
100	0.00	0.00	0.00	0.01	0.01	0.02	0.02	0.01	0.01	0.00	0.00	0.00	0.01	0.01	0.00	0.00	0.00	0.00	0.00
105	0.00	0.00	0.00	0.01	0.01	0.01	0.01	0.01	0.01	0.00	0.00	0.00	0.01	0.01	0.01	0.01	0.01	0.00	0.00
110	0.00	0.00	0.01	0.01	0.01	0.01	0.01	0.02	0.01	0.01	0.00	0.00	0.01	0.01	0.01	0.01	0.01	0.01	0.00
115	0.01	0.01	0.01	0.01	0.02	0.01	0.01	0.02	0.01	0.01	0.01	0.01	0.01	0.01	0.01	0.01	0.01	0.01	0.00
120	0.01	0.01	0.01	0.01	0.02	0.02	0.01	0.02	0.01	0.01	0.01	0.01	0.01	0.01	0.01	0.01	0.01	0.01	0.01
125	0.01	0.01	0.01	0.01	0.02	0.02	0.02	0.02	0.01	0.01	0.01	0.01	0.01	0.01	0.01	0.01	0.01	0.01	0.01
130	0.01	0.01	0.01	0.01	0.02	0.02	0.02	0.02	0.01	0.01	0.01	0.01	0.01	0.01	0.01	0.01	0.01	0.01	0.01
135	0.01	0.01	0.01	0.01	0.01	0.01	0.01	0.02	0.01	0.01	0.01	0.01	0.01	0.01	0.01	0.01	0.01	0.01	0.01
140	0.01	0.01	0.01	0.01	0.01	0.01	0.01	0.01	0.01	0.01	0.01	0.01	0.01	0.01	0.01	0.01	0.01	0.01	0.01
145	0.01	0.01	0.01	0.01	0.01	0.01	0.01	0.01	0.01	0.01	0.01	0.01	0.01	0.01	0.01	0.01	0.01	0.01	0.01
150	0.01	0.01	0.01	0.01	0.01	0.01	0.01	0.01	0.01	0.01	0.01	0.01	0.01	0.01	0.01	0.01	0.01	0.01	0.01
155	0.01	0.01	0.01	0.01	0.01	0.01	0.01	0.01	0.01	0.01	0.01	0.01	0.01	0.01	0.01	0.01	0.01	0.01	0.01
160	0.01	0.01	0.01	0.01	0.01	0.01	0.01	0.01	0.01	0.01	0.01	0.01	0.01	0.01	0.01	0.01	0.01	0.01	0.01
165	0.01	0.01	0.01	0.01	0.01	0.01	0.01	0.01	0.01	0.01	0.01	0.01	0.01	0.01	0.01	0.01	0.01	0.01	0.01
170	0.01	0.01	0.01	0.01	0.01	0.01	0.01	0.01	0.01	0.01	0.01	0.01	0.01	0.01	0.01	0.01	0.01	0.01	0.01
175	0.01	0.01	0.01	0.01	0.01	0.01	0.01	0.01	0.01	0.01	0.01	0.01	0.01	0.01	0.01	0.01	0.01	0.01	0.01
180	0.01	0.01	0.01	0.01	0.01	0.01	0.01	0.01	0.01	0.01	0.01	0.01	0.01	0.01	0.01	0.01	0.01	0.01	0.01

C Range: 0 - 360DEG
C Interval: 15.0DEG
Test Speed: MEDIUM
Temperature:25.3℃
Operators:
Test Date:2023-06-17

γ Range: 0 - 180DEG
γ Interval: 1.0DEG
Test System:EVERFINE GO-R5000_V2 SYSTEM V2.00.471
Humidity:65.0%
Test Distance:2.506m [K=1.0000]
Remarks:

LUMINOUS DISTRIBUTION INTENSITY DATA

Test:U:4.2000V I:0.4700A P:1.9740W PF:0.9000 Freq:50.00Hz Lamp Flux:340.25x1 lm		
NAME: Emergency CYCLOP	TYPE:	WEIGHT:
SPEC.:	DIM.:	SERIAL No.:
MFR.:	SUR.: 21cm*16cm	Shielding Angle:

Table--2

UNIT: cd

C (DEG) γ (DEG)	285	300	315	330	345														
0	71.0	71.0	71.0	71.0	70.9														
5	71.1	71.1	71.1	71.1	70.9														
10	70.6	70.5	70.5	70.4	70.1														
15	70.0	69.8	69.4	69.2	68.7														
20	71.1	70.4	69.3	68.3	67.7														
25	76.0	75.3	73.8	71.3	68.6														
30	83.0	83.5	81.9	78.4	74.5														
35	96.2	98.3	97.7	93.0	86.0														
40	115	118	116	108	99.2														
45	120	126	126	118	103														
50	85.9	82.7	79.3	78.0	77.5														
55	87.7	81.6	78.2	79.9	80.8														
60	93.4	80.9	73.6	79.0	87.4														
65	79.7	73.7	71.8	71.4	71.2														
70	70.6	70.5	69.8	69.1	69.3														
75	54.9	54.1	51.5	45.2	36.3														
80	3.91	3.71	3.34	2.69	2.40														
85	1.13	1.00	0.87	0.78	0.66														
90	0.52	0.46	0.36	0.21	0.04														
95	0.00	0.00	0.00	0.00	0.00														
100	0.00	0.00	0.00	0.00	0.00														
105	0.00	0.01	0.01	0.01	0.01														
110	0.01	0.01	0.01	0.01	0.01														
115	0.01	0.01	0.01	0.01	0.01														
120	0.01	0.01	0.01	0.01	0.01														
125	0.00	0.01	0.01	0.01	0.01														
130	0.01	0.01	0.01	0.01	0.01														
135	0.01	0.01	0.01	0.01	0.01														
140	0.01	0.01	0.01	0.01	0.01														
145	0.01	0.01	0.01	0.01	0.01														
150	0.01	0.01	0.01	0.01	0.01														
155	0.01	0.01	0.01	0.01	0.01														
160	0.01	0.01	0.01	0.01	0.01														
165	0.01	0.01	0.01	0.01	0.01														
170	0.01	0.01	0.01	0.01	0.01														
175	0.01	0.01	0.01	0.01	0.01														
180	0.01	0.01	0.01	0.01	0.01														

C Range: 0 - 360DEG
C Interval: 15.0DEG
Test Speed: MEDIUM
Temperature:25.3℃
Operators:
Test Date:2023-06-17

γ Range: 0 - 180DEG
γ Interval: 1.0DEG
Test System:EVERFINE GO-R5000_V2 SYSTEM V2.00.471
Humidity:65.0%
Test Distance:2.506m [K=1.0000]
Remarks: